

# Google Maps and Rover Routes

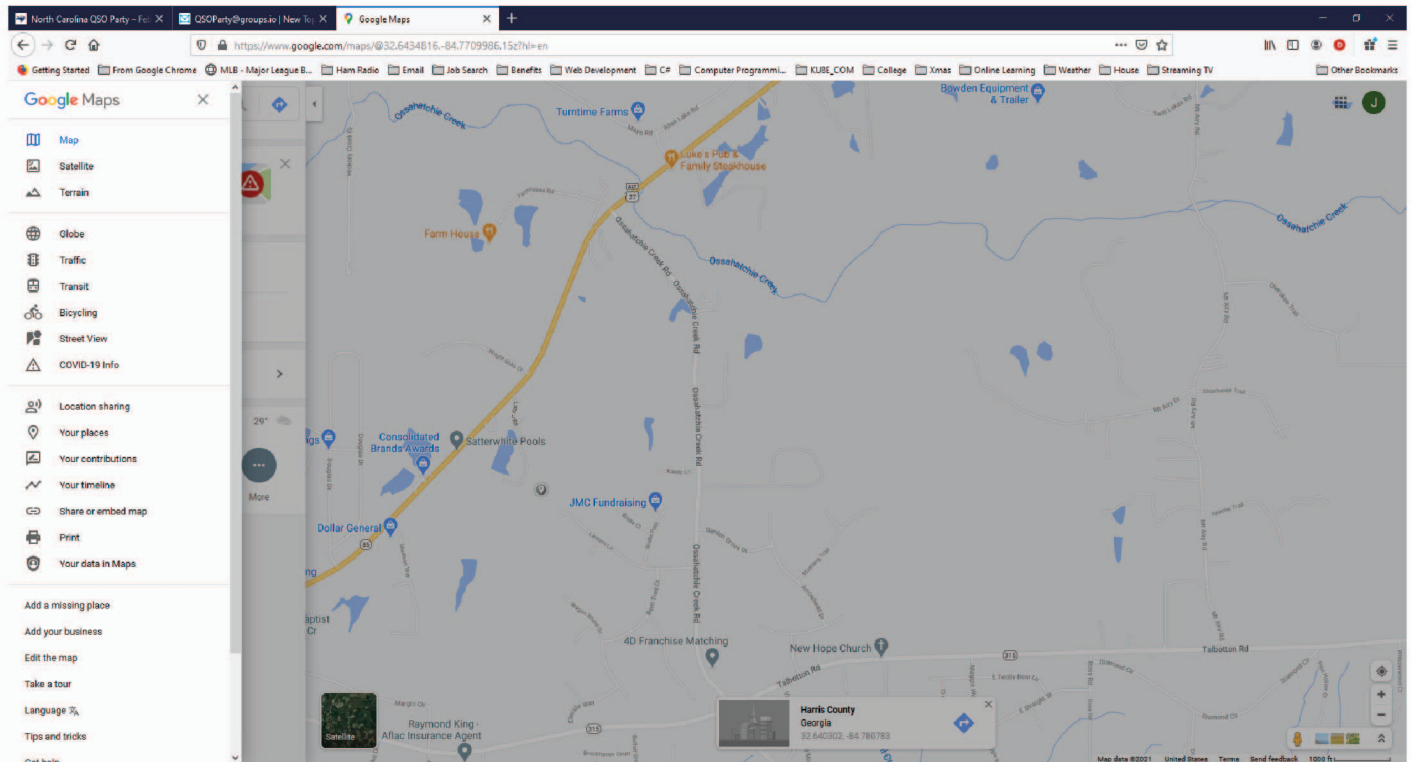


Jeff Clarke KU8E

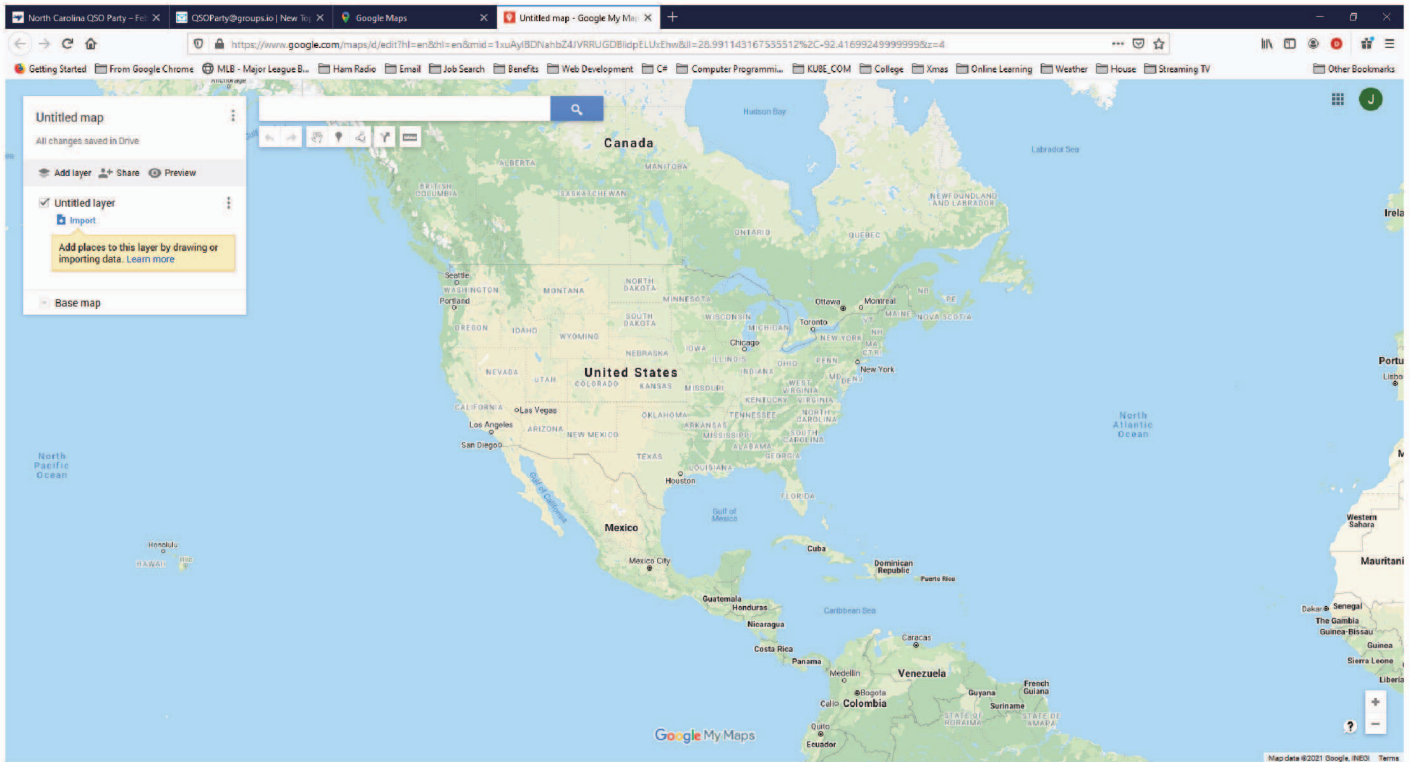
10:12am  (<https://groups.io/g/QSOParty/message/996>)

If anyone is interested in how to make nice rover route maps in Google Maps here's how to do it.

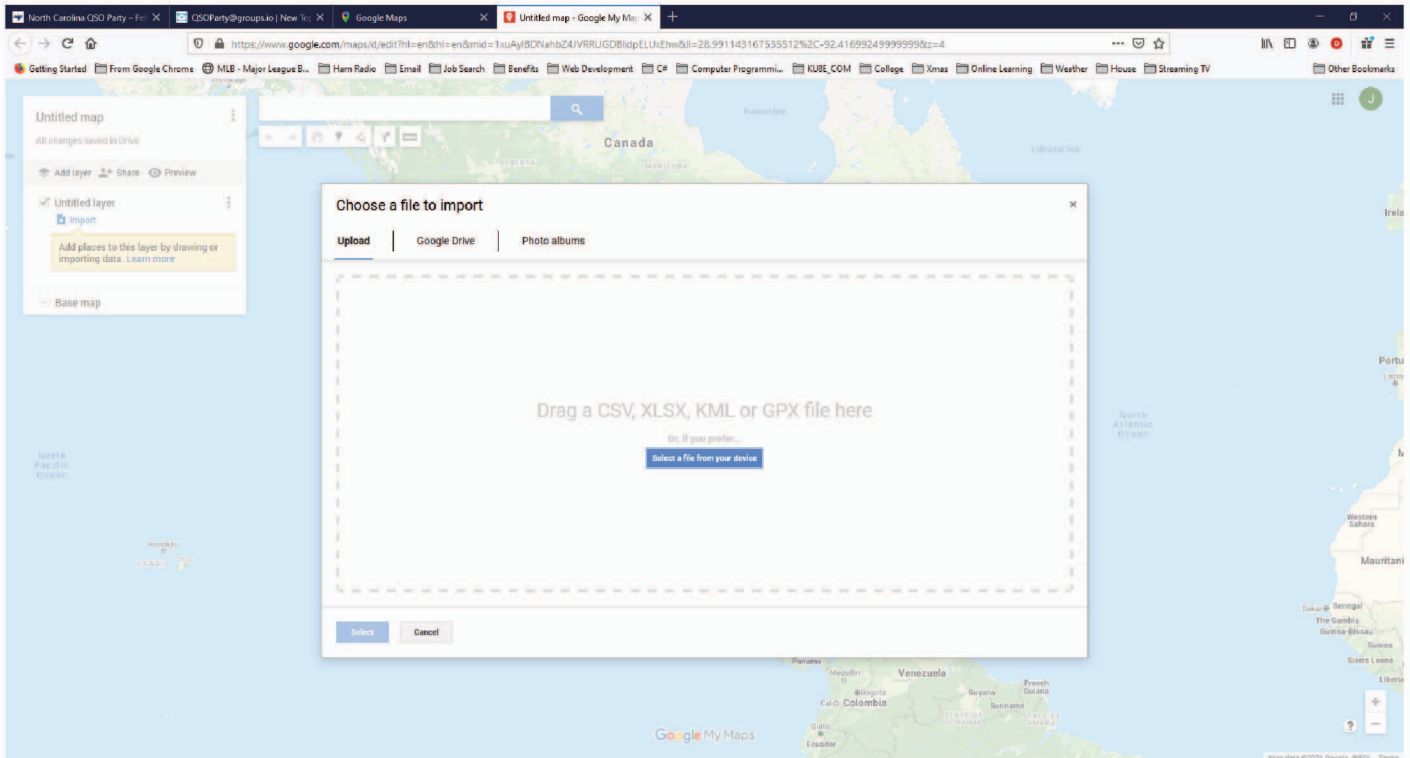
- 1) Sign in to your Google account.
- 2) Click on the 2nd circle from the right for Google Apps
- 3) Start Google Maps
- 4) Go to <https://no5w.com/CQxCountyOverlays-DL.php> (<https://no5w.com/CQxCountyOverlays-DL.php>) and download the Google maps overlay for your state. You will need to unzip the file.
- 5) In the Google Maps menu click on **Your Places -> Maps -> Create Map**



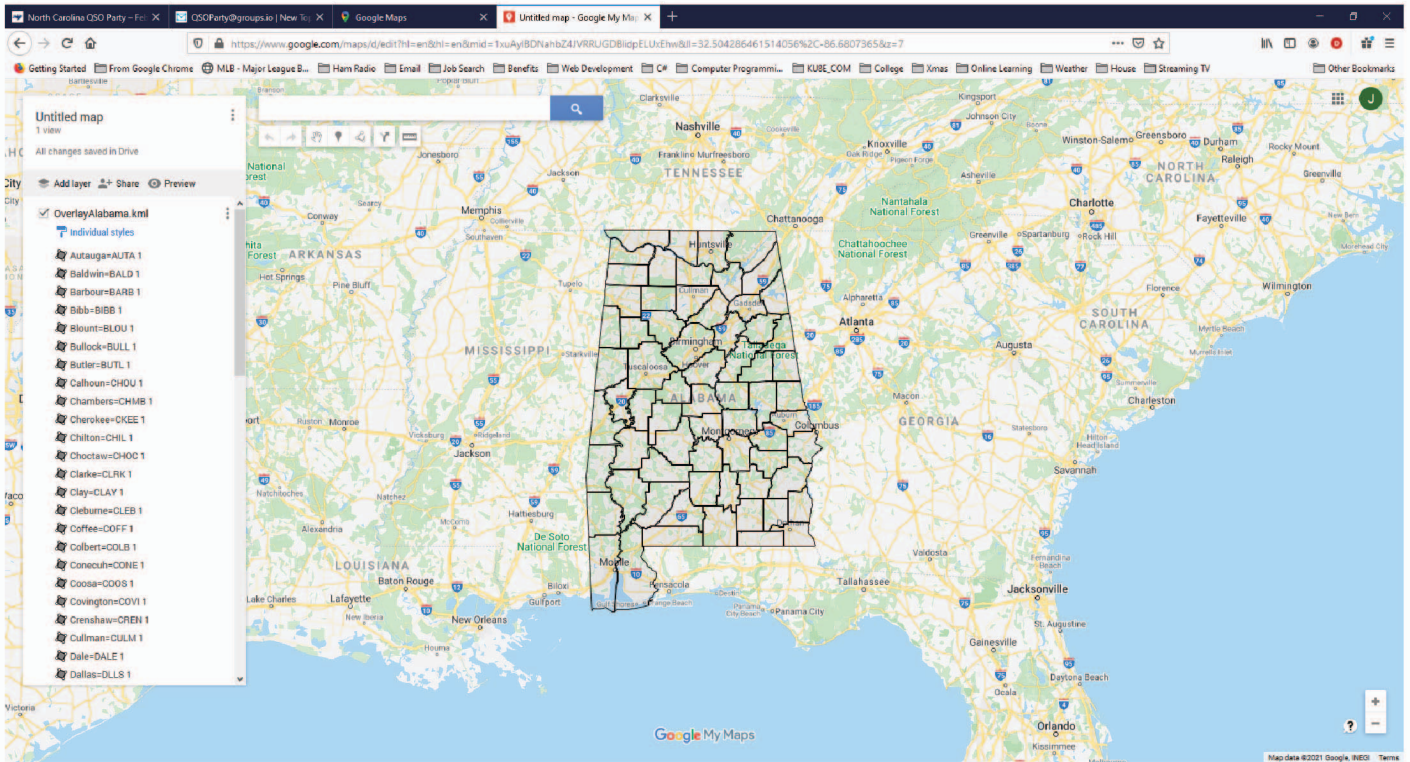
- 6) Click on **Import** on the Untitled Layer



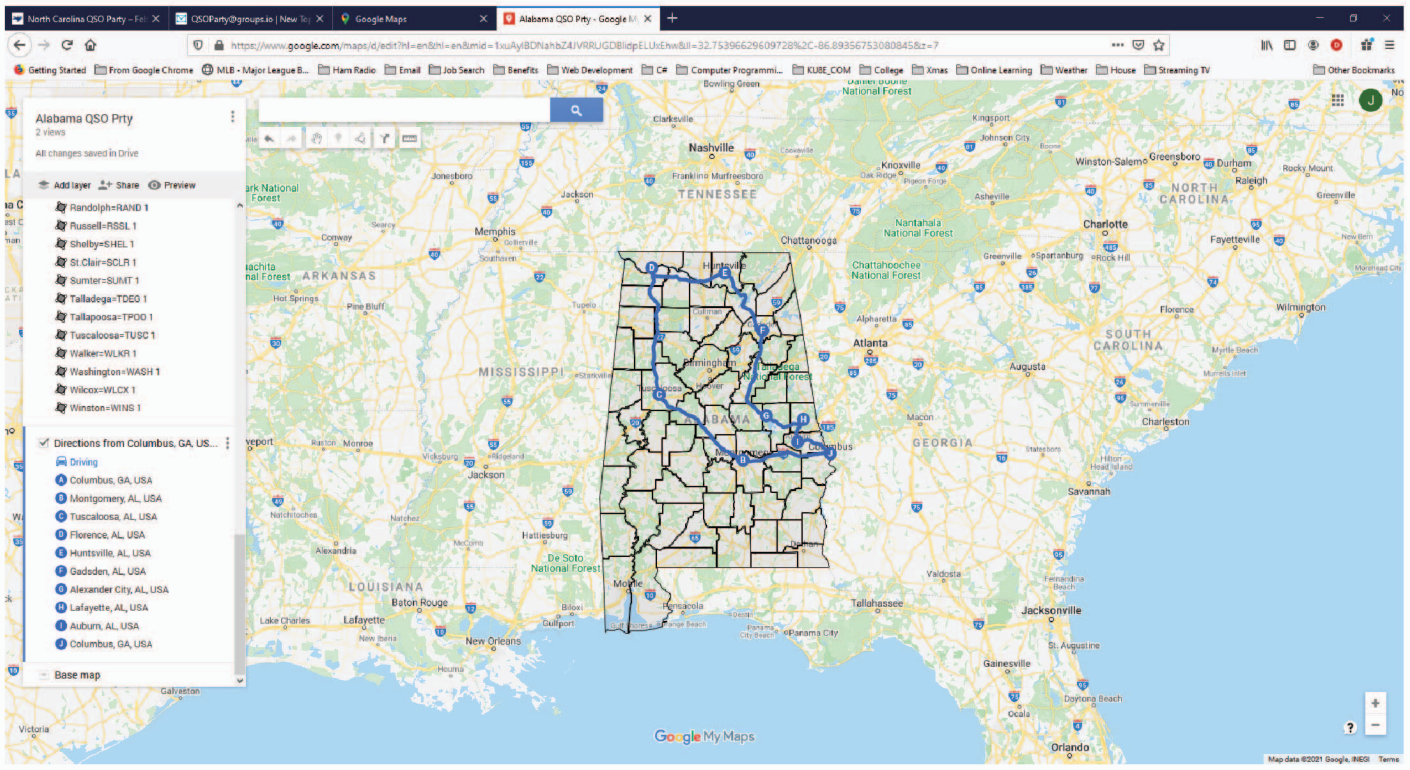
7) The following screen will appear to upload the overlay to your map with the county line boundaries. Drag or upload the file you downloaded from NO5W's webpage. There will be two files. A PHP file and a KML file. Use the KML file.



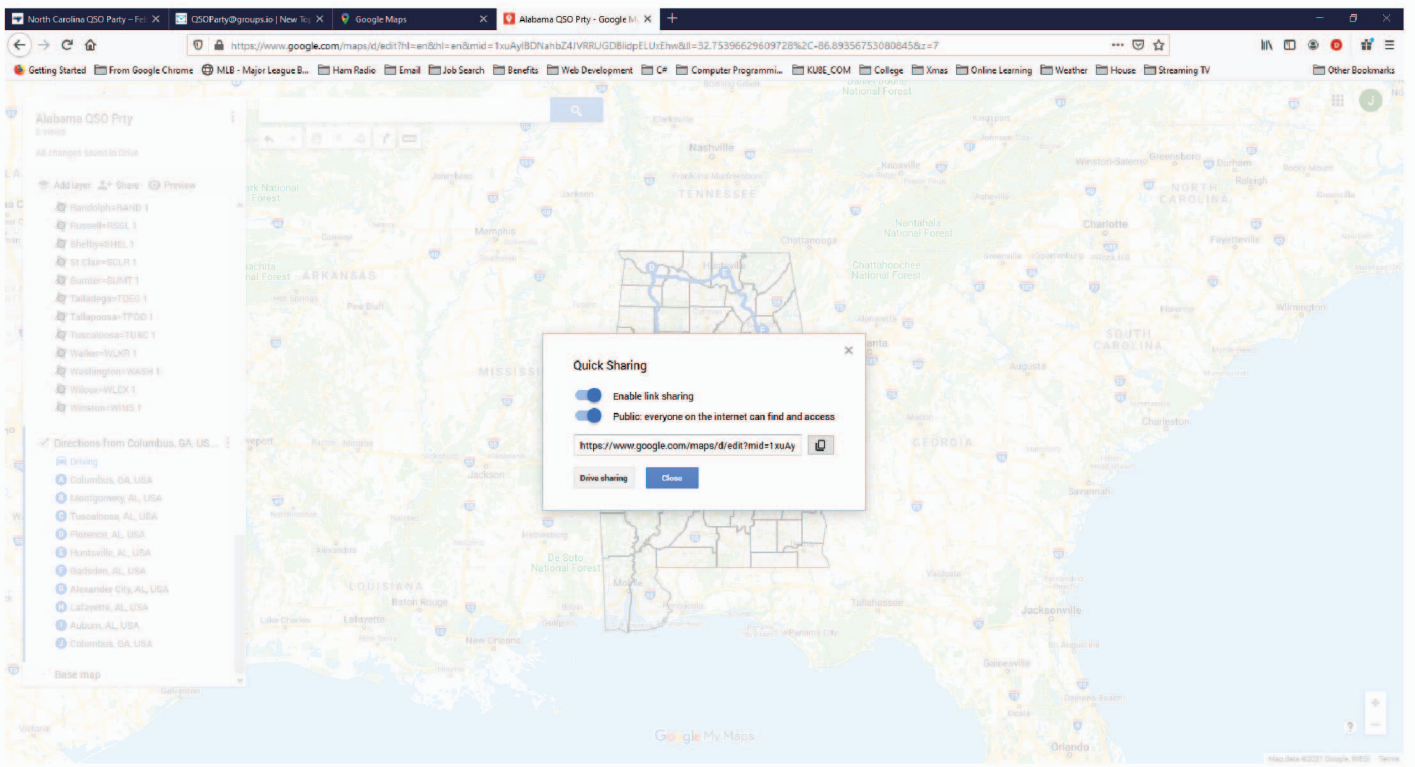
8) Your map will appear with the county boundaries.



9) You can add way points (your route) to the map using the **Add Directions** tool. Here's an example for the Alabama QSO Party. Note there is a limitation of 10 way points you can add to the map.



10) You can share your map by clicking on share on the left hand menu. Copy the URL to share you map with anyone who wants to see it.



Thanks to Chuck, NO5W for creating all the Google Maps over lay files and showing me how to do this.

Jeff KU8E

↩ Reply

👍 Like

☰ More

👍 1 person liked this

◀ View All 3 Messages In Topic (/g/QSOParty/topic/80684955#996)

▶ (/g/QSOParty/message/997)

◀ (/g/QSOParty/message/995)

#996

▶ (/g/QSOParty/message/997)